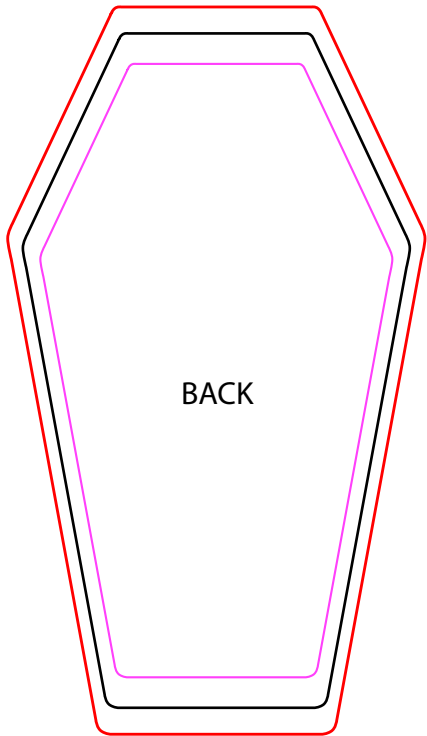


FRONT



BACK

- All graphics and type (live area) have to be within the pink line. If you have a bleed, graphics and type can come out of this line
- Any bleed in your design need to reach out to the red line
- Business Card cut line is indicated with the black line

- Need us to create a business card design for you? Contact us at info@twocrowsprinting.com
- If you need help laying out your design we can do that for a fee. Contact us at info@twocrowsprinting.com